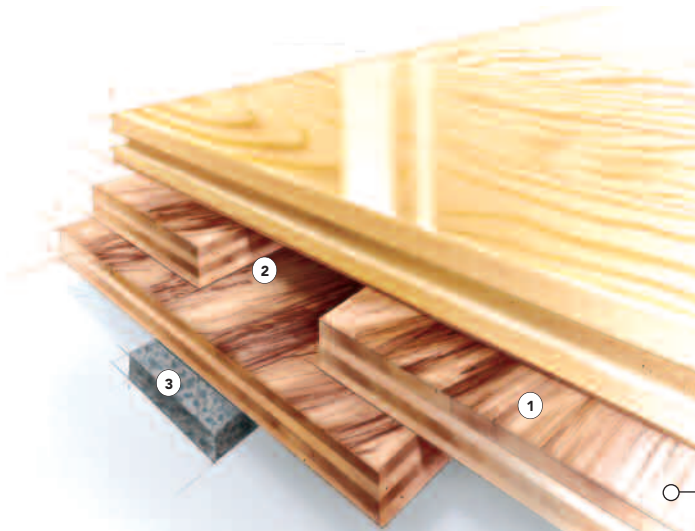


SYSTEM FEATURES AND BENEFITS

A fixed resilient sports floor system with high shock absorption, consisting in general of a vapor barrier, resilient Rezill pads, wood subfloor, sectional steel channel, steel anchors, maple flooring, sanding, sealers, finishes, game lines and wall base.



- ① Pre-assembled subfloor panels
- ② Underlayment grade plywood
- ③ Rezill Pad

SPECIFICATIONS

MANUFACTURING

ISO 9001:2000
CERTIFIED

SYSTEM TYPE

Fixed Resilient

ANCHORAGE

Sectional Channel
(Design Group 2)

SUBFLOOR CONSTRUCTION

Plywood Panel

RESILIENCE

Rezill Pads

NIKE GRIND



ONLY Connor offers flooring systems with Nike Grind Components

SLAB DEPRESSION

25/32" flooring – 2 1/8"
33/32" flooring – 2 3/8"

DIN STATUS



D-I-N
Meets or exceeds all the requirements of DIN 18032, Part 2

TESTING LABORATORY



United States Sports Surfacing Laboratory

CERTIFIED TESTING

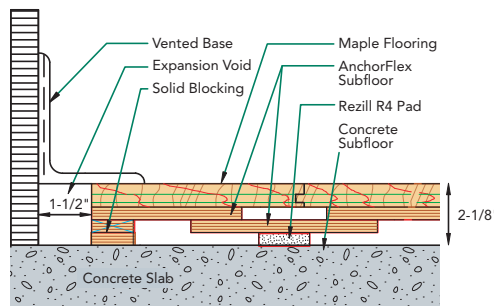


Laboratory test equipment calibrated and certified through the ISSS

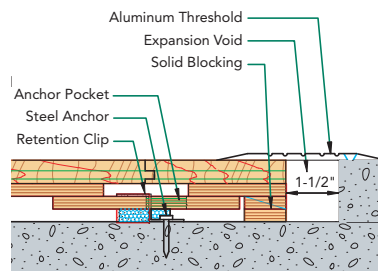
GREEN STATUS

Managed forests, certification available

WALL BASE DETAIL



THRESHOLD DETAIL (optional accessory)



EQUIPMENT DETAIL (optional accessory)

