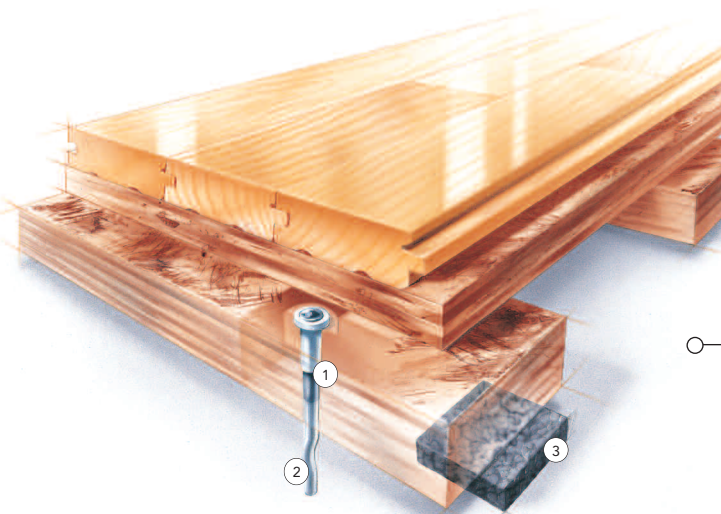


## SYSTEM FEATURES AND BENEFITS

A sports floor system providing resiliency and substrate anchorage consisting in general of a vapor barrier, Rezill resilient pads, plywood sleepers, plywood subfloor, anti-squeak collared steel anchors, maple flooring, sanding, sealers, finishes, game lines and wall base.



- ① Anti-Squeak Collar
- ② Installed with Connor "Sure Stop" Anchorage Tool
- ③ Rezill Pad

## SPECIFICATIONS

### MANUFACTURING

**ISO9001:2000**  
CERTIFIED

### SYSTEM TYPE

Fixed Resilient

### ANCHORAGE

Singular pinned  
(Design Group 3)

### SUBFLOOR CONSTRUCTION

Sleeper and Plywood

### RESILIENCE

Rezill pads

### NIKE GRIND



ONLY Connor offers flooring systems with Nike Grind Components

### SLAB DEPRESSION

25/32" flooring – 2 5/8"  
33/32" flooring – 2 7/8"

### DIN STATUS



### D-I-N

Meets or exceeds all requirements of DIN 18032, Part 2

### TESTING LABORATORY



United States Sports Surfacing Laboratory

### CERTIFIED TESTING

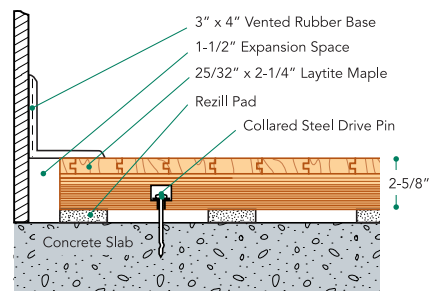


Laboratory test equipment calibrated and certified through the ISSS

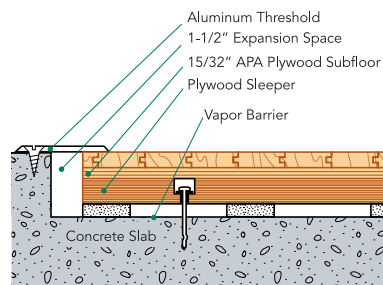
### GREEN STATUS

Managed forests, certification available

### WALL BASE DETAIL



### THRESHOLD DETAIL (optional accessory)



### EQUIPMENT DETAIL (optional accessory)

