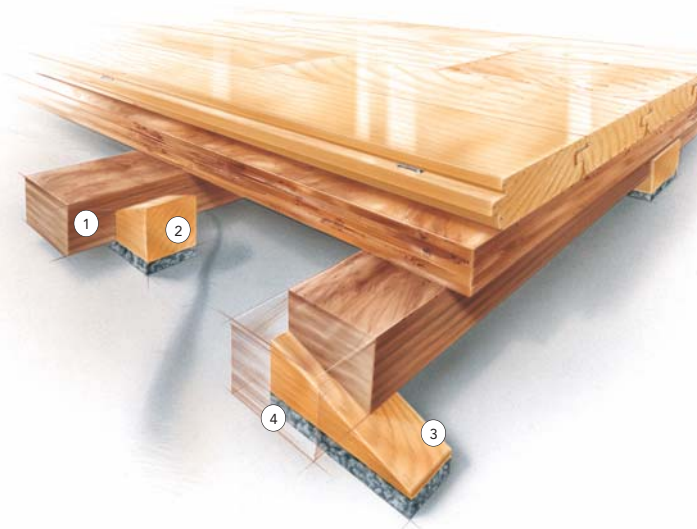


F L O A T I N G S Y S T E M

SYSTEM FEATURES AND BENEFITS

A floating sports floor system providing very good shock absorption and basketball rebound, consisting in general of a vapor barrier, resilient Rezill pads, "Quick Level" adjustment blocks, plywood sleepers, plywood subfloor, maple flooring, sanding, sealers, finishes, game lines and wall base.

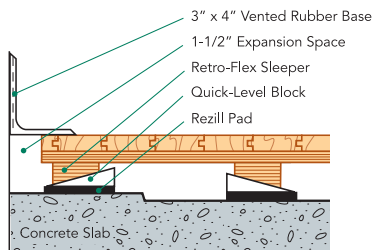


- ① LVL Plywood Sleeper with Quick-Level slots
- ② Quick-Level Block, minimally inserted at high areas
- ③ Quick-Level Block, substantially inserted at low areas
- ④ High performance Rezill pad

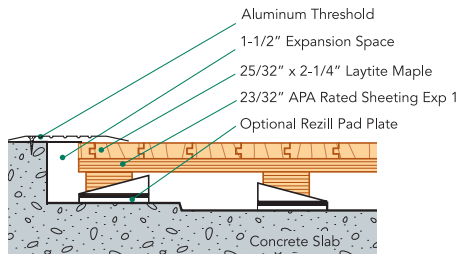
SPECIFICATIONS

MANUFACTURING	ISO 9001:2000 CERTIFIED
U.S. PATENT #	Patent Pending
SYSTEM TYPE	Floating System
ANCHORAGE	No concrete attachment
SUBFLOOR CONSTRUCTION	Sleeper and Plywood
RESILIENCE	Rezill Pads
NIKE GRIND	ONLY Connor offers flooring systems with Nike Grind Components
SLAB DEPRESSION	23/32" plywood: 25/32" flooring – 3 1/4" Plus 33/32" flooring – 3 1/2" Plus 15/32" plywood: 25/32" flooring – 3" Plus 33/32" flooring – 3 1/4" Plus
TESTING LABORATORY	United States Sports Surfacing Laboratory
CERTIFIED TESTING	Laboratory test equipment calibrated and certified through the ISSS
GREEN STATUS	Managed forests, certification available

WALL BASE DETAIL



THRESHOLD DETAIL (optional accessory)



EQUIPMENT DETAIL (optional accessory)

