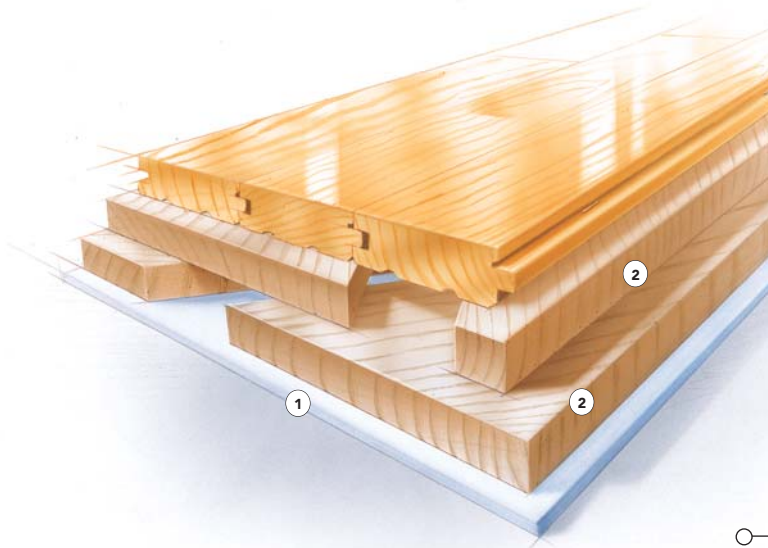


F L O A T I N G S Y S T E M

SYSTEM FEATURES AND BENEFITS

A floating sports floor system providing uniform play consisting in general of a vapor barrier, blanket foam underlayment, two layers nominal 1" x 6" softwood subfloor, maple flooring, sanding, sealers, finishes, game lines and wall base.

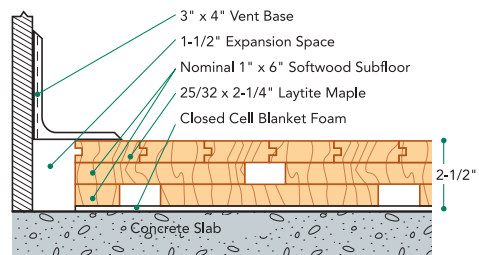


- ① Foam Blanket
- ② Nominal 1 x 6 softwood subfloor

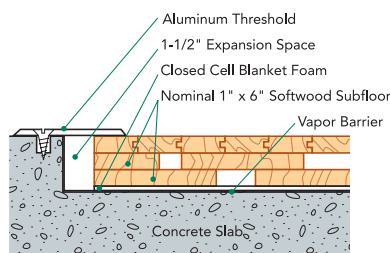
SPECIFICATIONS

MANUFACTURING	ISO 9001:2000 CERTIFIED
SYSTEM TYPE	Floating System
ANCHORAGE	No concrete attachment
SUBFLOOR CONSTRUCTION	Softwood Sleepers
RESILIENCE	Closed Cell Blanket Foam
SLAB DEPRESSION	25/32" flooring - 2 1/2" 33/32" flooring - 2 3/4" Adjust slab depression accordingly when replacing 1/4" foam with other thickness
TESTING LABORATORY	United States Sports Surfacing Laboratory
CERTIFIED TESTING	Laboratory test equipment calibrated and certified through the ISSS
GREEN STATUS	Managed forests, certification available.

WALL BASE DETAIL



THRESHOLD DETAIL (optional accessory)



EQUIPMENT DETAIL (optional accessory)

