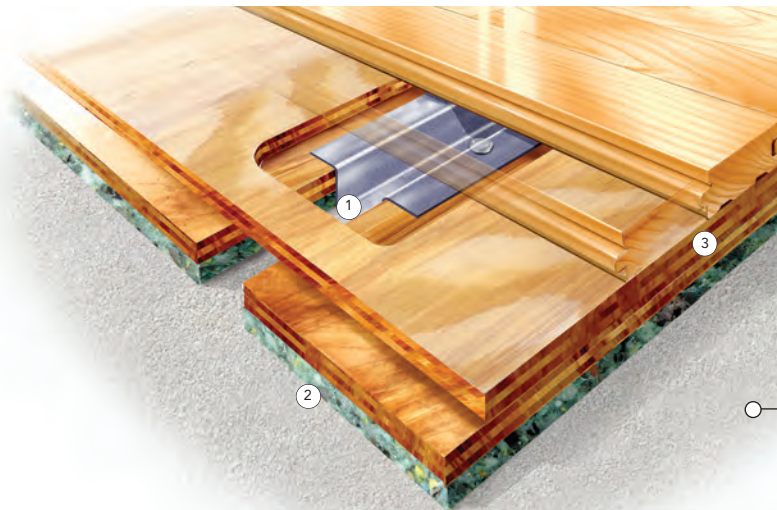


## SYSTEM FEATURES AND BENEFITS

A sports floor system providing the stability of an anchored floor with the uniform resiliency of a floating system, consisting in general of a vapor barrier, blanket pad, steel channel, steel anchors, wood subflooring, maple flooring, sanding, sealers, finishes, game lines and wall base.



- ① Heavy-duty, buckle resistant steel channel provides great resistance to pin pull through and upward pressure
- ② Rebonded open cell flexible polyurethane foam blanket
- ③ Two layers APA rated plywood sheathing

## SPECIFICATIONS

### MANUFACTURING

**ISO9001:2000**  
CERTIFIED

### U.S. PATENT #

Pending

### SYSTEM TYPE

Fixed Resilient

### ANCHORAGE

Sectional Channel  
(Design Group 2)

### SUBFLOOR CONSTRUCTION

Plywood Panel

### RESILIENCE

Foam Blanket

### RECYCLED CONTRIBUTION



S-Channel HC subfloor system includes components with recycled content

### SLAB DEPRESSION

25/32" (20 mm) flooring – 2" (51mm)  
33/32" (26mm) flooring – 2 1/4" (57mm)

### DIN STATUS



### D·I·N

Meets or exceeds all requirements of DIN 18032, Part 2

### TESTING LABORATORY



United States Sports Surfacing Laboratory

### CERTIFIED TESTING



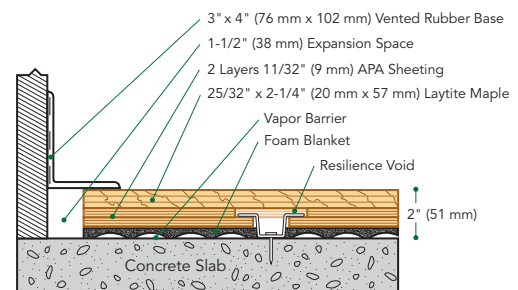
Laboratory test equipment calibrated and certified through the ISSS

### GREEN STATUS

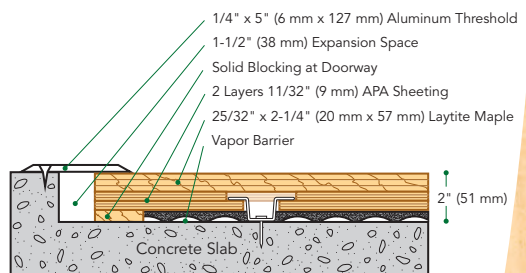


Managed forests, certification available

### WALL BASE DETAIL



### THRESHOLD DETAIL (optional accessory)



### EQUIPMENT DETAIL (optional accessory)

